

Second Chance, Inc.

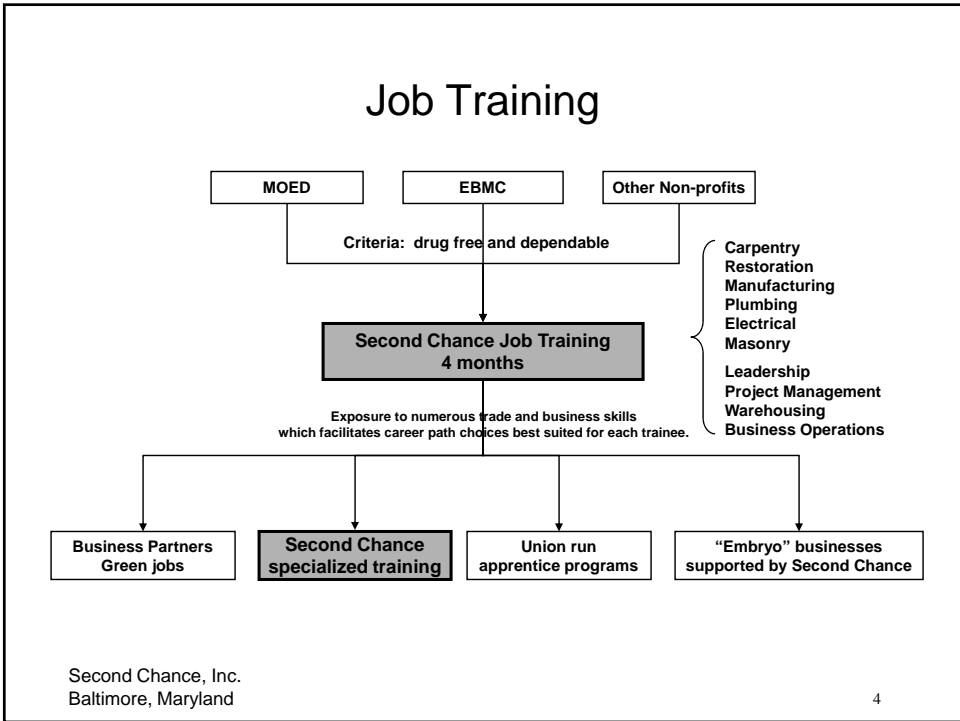
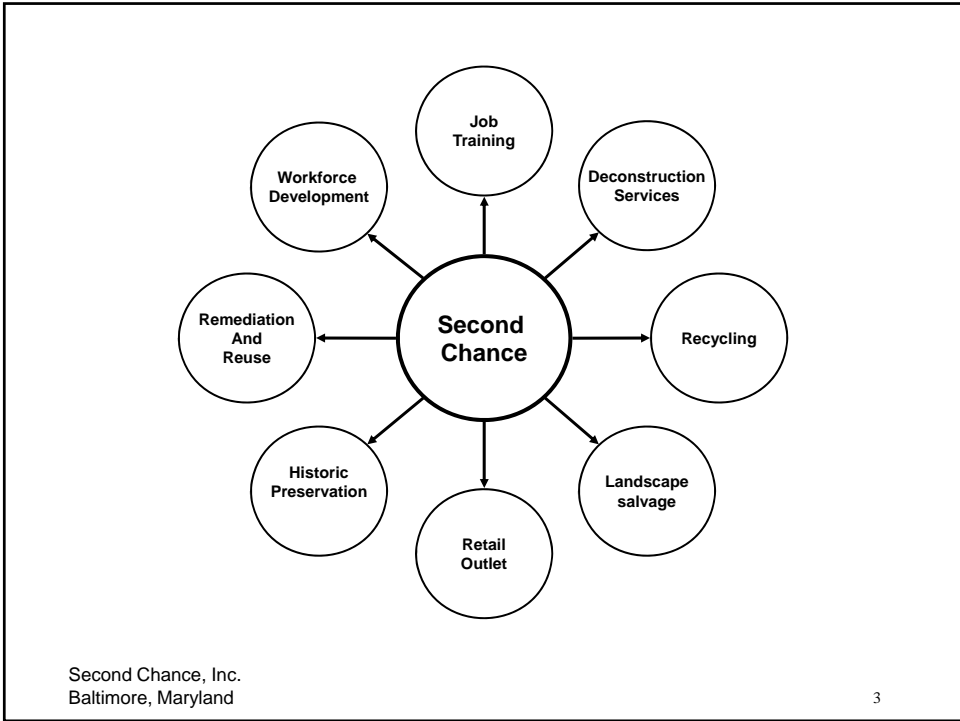
Baltimore, Maryland

Mission Statement

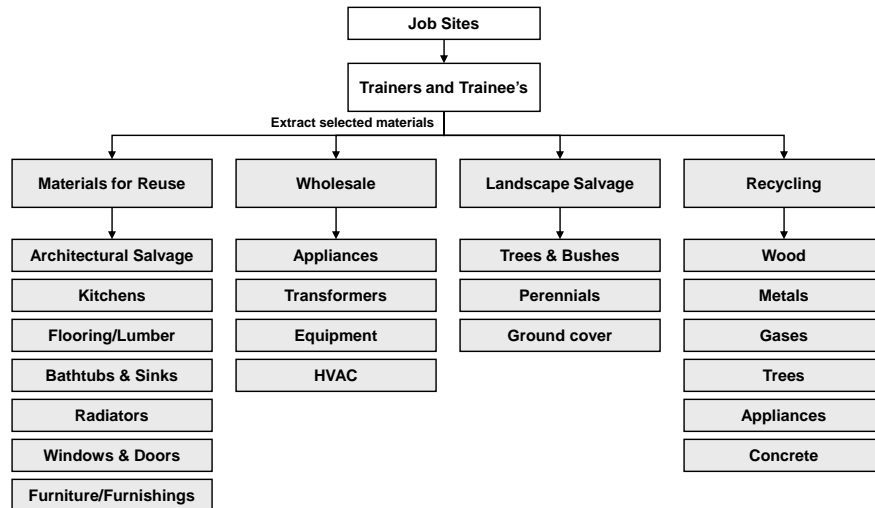
Second Chance provides job training and workforce development in the areas of architectural salvage, deconstruction, and related areas. Preservation and reuse of architectural artifacts representing local history is a key focus. Another key focus is diversion of building materials from landfills. The development of trained deconstruction workers to carry out our mission is a primary objective of the training program.

Second Chance, Inc.
Baltimore, Maryland

2



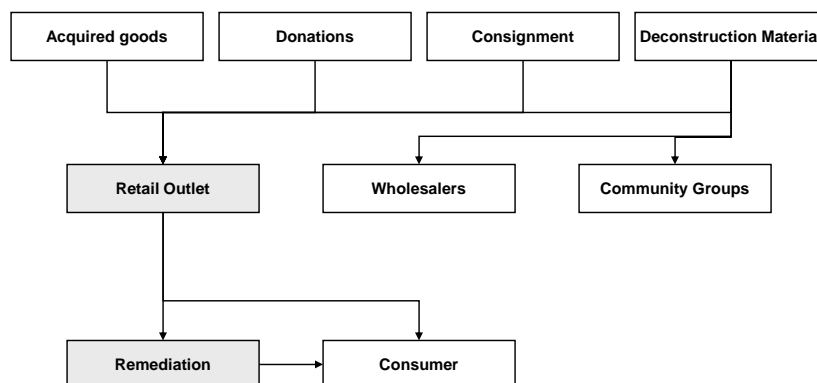
Deconstruction, Salvage & Recycling



Second Chance, Inc.
Baltimore, Maryland

5

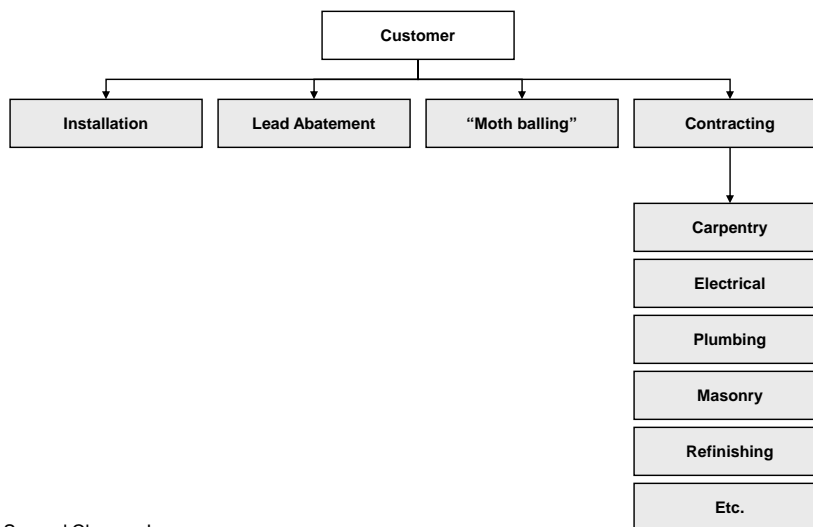
Retail Store



Second Chance, Inc.
Baltimore, Maryland

6

Future services



Second Chance, Inc.
Baltimore, Maryland

7

Social Enterprise

Self Sufficiency is a required Outcome

Started:	2003	\$ 390,000	7 employees
	2010	\$ 3,500,000	75 employees

Overall Philosophy of our organization is the Three P's

- **Philanthropy** – people and corporations have the duty to do what is in the public good when given the opportunity...
- **Public Relations** – when you make good decisions others should know about it and appreciate it
- **Profit** - The tax code is set up to motivate good decisions

Second Chance, Inc.
Baltimore, Maryland

8

Progress Report

- Creation of Workforce Development and Job Training organization**
- Creation of 75 new jobs in a Baltimore City Empowerment Zone**
- Development of programs that interact with and support local communities**
- Significant preservation of historical materials and mitigation of losses**
 - Increased stature and credibility for the organization**
 - Creation of large retail presence in an Empowerment Zone**
- Created a self-sustaining organization able to grow beneficial programs**
- Continued expansion of workforce development capabilities**
- Entity stable and capable of 30 newly trained people per year**
 - Entity that can enhance local CDC efforts**
- Emphasis on skills related to preservation of historical materials**
 - Development of capacities in recycling**

Second Chance, Inc.
Baltimore, Maryland

9

Closing Comments

Social Enterprise is a business and requires quality management

Demolition companies are inherently inefficient as agents of salvage

- Need for proper techniques to preserve value
- Need "marketplace" to achieve sales for all salvage
- Can be a partner to achieve broader scope of salvage
- Demolition and Recycling job and income stream remains
- Non-Profit status provides significant advantages to Owner

Foundations are making "investments" in creating green jobs

- Monetary support facilitates ability to remain cost effective while incorporating the training component

What a great job to have !!!!

Second Chance, Inc.
Baltimore, Maryland

10