



The Demolition Impact
 C&D Recycling Forum
 Baltimore, Maryland
 October 4, 2010

Jason Haus
 Dem-Con Companies
 Shakopee, Minnesota




The Demolition Impact

- The Demolition Industry are the original recyclers
 - You recycle the most valuable product – Land
- Contractors have been innovators in recovery...
 - Times have changed the way we look at:
 - Demolition
 - Processing
 - Recycling
 - Equipment we use to recycle

What is right for you?









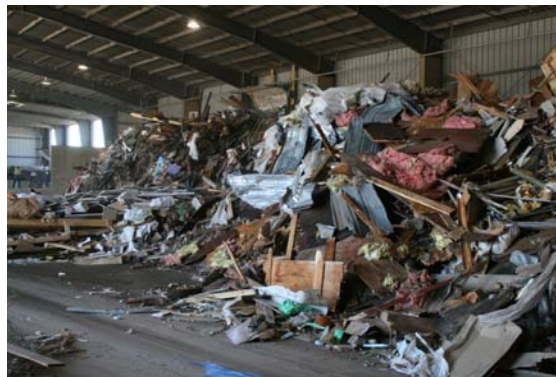
The Demolition Impact

- Methods of recycling
 - Heavy equipment razing of structures
 - Specialty razing
 - Interior demolition
 - Deconstruction



The Demolition Impact

Regardless of the method....



....There are residuals



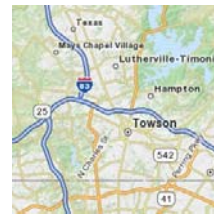
The Demolition Impact

- Is a mixed C&D system right for you?
 - Competition
 - End Markets
 - Equipment
 - Operations
 - Regulations



The Demolition Impact

- Competition
 - Does your population base justify infrastructure
 - Processing vs. Landfilling
 - Is recovery impacting your demolition projects
 - Does it help “get the bid”



The Demolition Impact

- End Markets

- Must have for a mixed processing facility
- What markets are available in your area?

- » Wood
- » Ferrous and Non-ferrous
- » Aggregate
- » Cardboard
- » ADC
- » Shingles
- » Rigid Plastic
- » Gypsum
- » Film



- Must be a consistent output of quantity and quality



The Demolition Impact

- End Markets

- Do you have access to a landfill?
- Another must have relationship
 - Fines
 - Residuals –can be up to 40% of your incoming waste



The Demolition Impact

- Operations
 - Workforce
 - Minimum of 10 additional employees
 - Do you have access to staffing
 - Quality of staff
 - Language barriers



C&D
recycling
FORUM

recycling
today
EVENTS

The Demolition Impact

- Operations
 - Maintenance
 - Must schedule down time
 - Be aware of the moving parts
 - Safety
 - Daily clean up
 - Dust Control
 - Where is dust generated
 - How to reduce the dust
 - Summer / Winter



C&D
recycling
FORUM

recycling
today
EVENTS

The Demolition Impact

- Regulations
 - State permits & licenses
 - Some designate as recycling facility other just solid waste facility
 - OSHA
 - Routine visits
 - Dust inspections
 - Air quality
 - Noise monitoring
 - LOTO



The Demolition Impact

C&D Recycling Forum

Jason Haus

jasonhaus@dem-con.com

952-224-7110

Dem-Con Companies



The Demolition Impact

